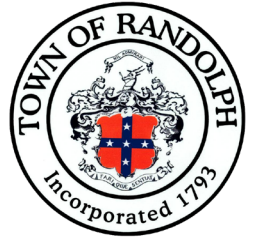


ELIZABETH G. LYONS ELEMENTARY SCHOOL

RANDOLPH, MA



BUILDING COMMITTEE PRESENTATION

JUNE 2ND, 2021

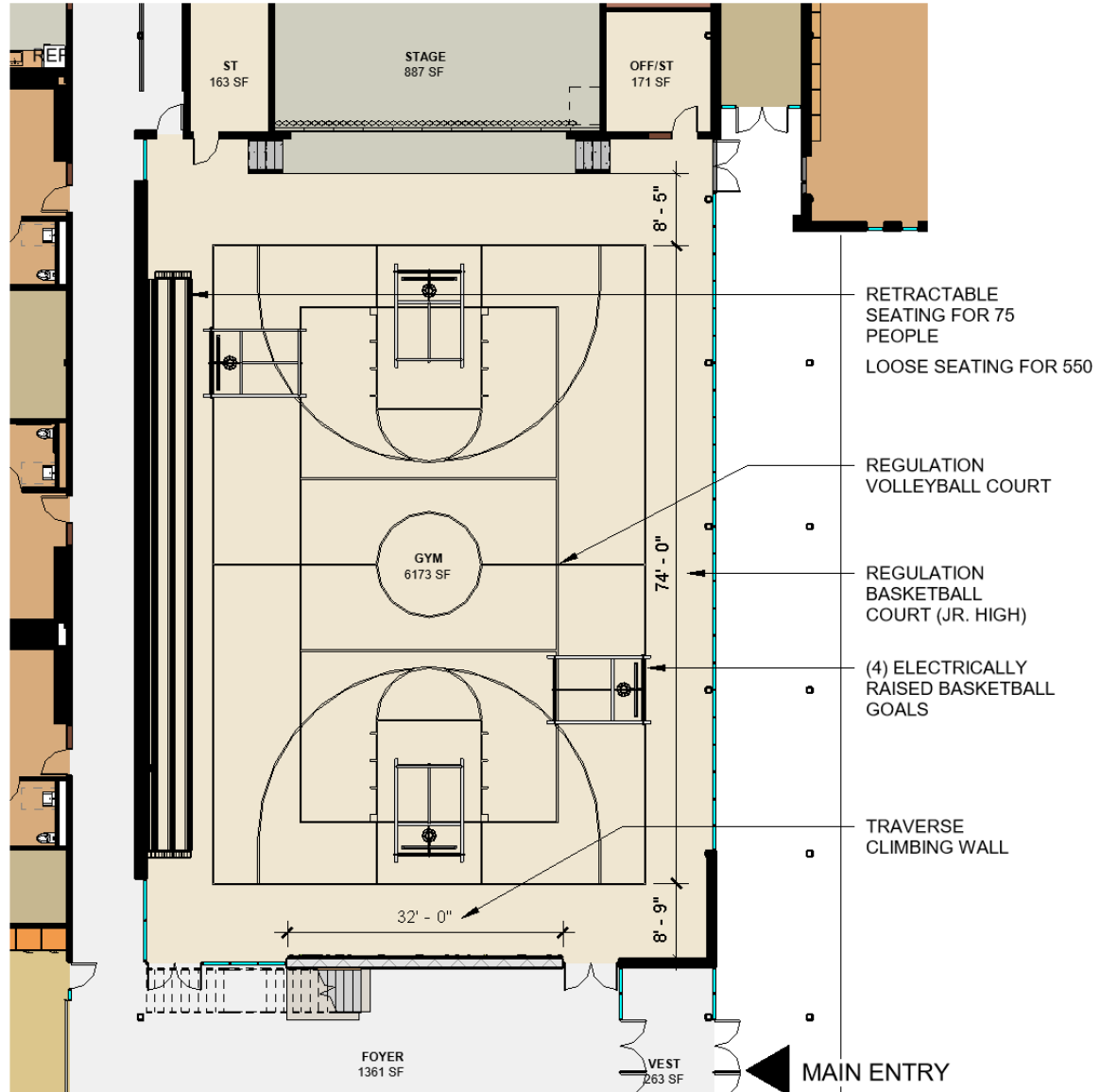
TSKP
STUDIO

DAEDALUS
A CHA Company

LYONS ELEMENTARY SCHOOL | GOALS OF THE MEETING

- Gymnasium Community Use
 - Retractable Seating
 - Basketball, Volleyball, ...?
- LEED Meeting Update
- Utility Incentives Meeting Update

LYONS ELEMENTARY SCHOOL | GYMNASIUM REVIEW



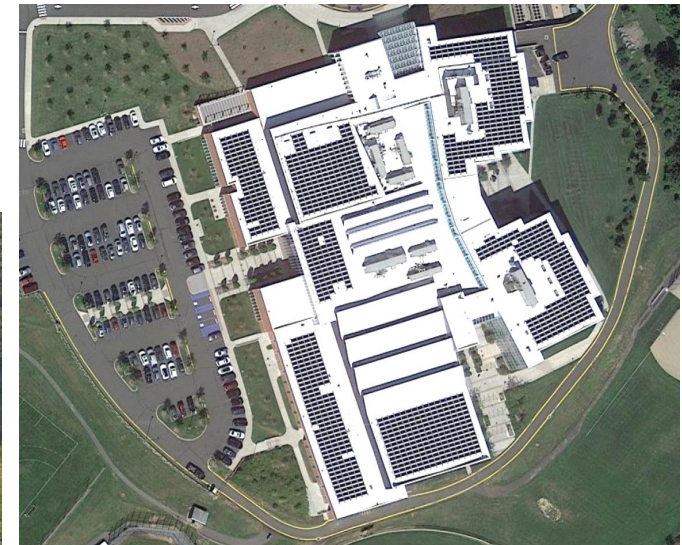
Minimum Requirements for funding:

- 1) LEED v4 Certified, or NE-CHPS Verified
- 2) 10% better than energy code

Platinum	(80+ points)
Gold	(60 – 79 points)
Silver	(50 – 59 points)
Certified	(40 - 49 points)

2% additional reimbursement for projects that can exceed energy code by at least 20%

“Solar-ready” (MSBA does not fund solar)



LYONS ELEMENTARY SCHOOL | LEED SCORECARD

Yes	Maybe	No	INTEGRATIVE PROCESS		1
0	1	0			
D			1		1
			IPc1	Integrative Process	1

Yes	Maybe	No	LOCATION & TRANSPORTATION		15
4	3	8			
D		N			
			LTc1	LEED for Neighborhood Development Location	15
D	1				
			LTc2	Sensitive Land Protection	1
D	1	1			
			LTc3	High Priority Site	1-2
D	2	3			
			LTc4	Surrounding Density and Diverse Uses	1-5
D		4			
			LTc5	Access to Quality Transit	1-4
D	1				
			LTc6	Bicycle Facilities	1
D	1				
			LTc7	Reduced Parking Footprint	1
D	1				
			LTc8	Green Vehicles	1

Yes	Maybe	No	SUSTAINABLE SITES		12
3	9	0			
C	Y				
			SSpr1	Construction Activity Pollution Prevention	Req'd
D	Y				
			SSpr2	Environmental Site Assessment	Req'd
D	1				
			SSc1	Site Assessment	1
D		2			
			SSc2	Site Development - Protect or Restore Habitat	1-2
D	1				
			SSc3	Open Space	1
D		3			
			SSc4	Rainwater Management	2-3
D	2				
			SSc5	Heat Island Reduction	1-2
D	1				
			SSc6	Light Pollution Reduction	1
D	1				
			SSc7	Site Master Plan	1
D	1				
			SSc8	Joint Use of Facilities	1

Yes	Maybe	No	WATER EFFICIENCY		12
4	6	2			
D	Y				
			WEpr1	Outdoor Water Use Reduction	Req'd
D	Y				
			WEpr2	Indoor Water Use Reduction	Req'd
D	Y				
			WEpr3	Building-level Water Metering	Req'd
D	1	1			
			WEc1	Outdoor Water Use Reduction	1-2
D	2	5			
			WEc2	Indoor Water Use Reduction	1-7
D		2			
			WEc3	Cooling Tower Water Use	1-2
D	1				
			WEc4	Water Metering	1

Yes	Maybe	No	ENERGY & ATMOSPHERE		31
20	11	0			
C	6				
			EAc1	Enhanced Commissioning	2-6
D	14	2			
			EAc2	Optimize Energy Performance	1-16
D		1			
			EAc3	Advanced Energy Metering	1
C		2			
			EAc4	Demand Response	1-2
D		3			
			EAc5	Renewable Energy Production	1-3
D		1			
			EAc6	Enhanced Refrigerant Management	1
C		2			
			EAc7	Green Power and Carbon Offsets	1-2

Yes	Maybe	No	MATERIALS & RESOURCES		13
4	7	2			
D	Y				
			MRpr1	Storage & Collection of Recyclables	Req'd
C	Y				
			MRpr2	Construction and Demolition Waste Management Plan	Req'd
C		3			
			MRc1	Building Life-Cycle Impact Reduction	2-5
C	1	1			
			MRc2	Building Product Disclosure & Optimization-EPD's	1-2
C	1	1			
			MRc3	Building Product Disclosure & Optimization-Raw Materials	1-2
C	1	1			
			MRc4	Building Product Disclosure & Optimization-Material Ingredients	1-2
C	1	1			
			MRc5	Construction and Demolition Waste Management	1-2

Yes	Maybe	No	INDOOR ENVIRONMENTAL QUALITY		16
6	10	0			
D	Y				
			EQpr1	Minimum IAQ Performance	Req'd
D	Y				
			EQpr2	Environmental Tobacco Smoke (ETS) Control	Req'd
D	Y				
			EQpr3	Minimum Acoustical Performance	Req'd
D	2				
			EQc1	Enhanced IAQ Strategies	1-2
C	1	2			
			EQc2	Low-Emitting Materials	1-3
C	1				
			EQc3	Construction IAQ Management Plan	1
C		2			
			EQc4	IAQ Assessment	1-2
D	1				
			EQc5	Thermal Comfort	1
D	1	1			
			EQc6	Interior Lighting	1-2
D		3			
			EQc7	Daylight	1-3
D		1			
			EQc8	Quality Views	1
D	1				
			EQc9	Acoustic Performance	1

Yes	Maybe	No	INNOVATION		6
3	3	0			
D	1				
			INc1.1	Innovation: Building as an Education Tool	1
D	1				
			INc1.2	Innovation: Green Cleaning and Integrated Pest Management	1
D		1			
			INc1.3	Innovation: Biophilic Design	1
C		1			
			INc1.4	Innovation: Local Food Production	1
C		1			
			INc1.5	Pilot Credit: Integrative Analysis or Building Materials	1
C	1				
			INc2	LEED Accredited Professional	1

Yes	Maybe	No	REGIONAL PRIORITY 02368 (underlined)		4
1	3	0			
D					
			RPc1	Regional: Building life-cycle impact reduction (2 pnts)	1
D	1				
			RPc2	Regional: Optimize energy performance (8 pnts)	1
D		1			
			RPc3	Regional: Indoor water use reduction (4 pnts)	1
D					
			RPc4	Regional: High priority site (2 pnts)	1
D		1			
			RPcX	Regional: Rainwater management (2 pnts)	1
D		1			
			RPcX	Regional: Renewable energy production (2 pnts)	1

Yes	Maybe	No	PROJECT TOTALS (Certification Estimates)		110
45	53	12			

Certified: 40-49 points Silver: 50-59 points Gold: 60-79 points Platinum: 80+ points

LYONS ELEMENTARY SCHOOL | UTILITY INCENTIVES

Path 2: Whole Building EUI Reduction

Path 1: ZNE/Deep Energy Savings

