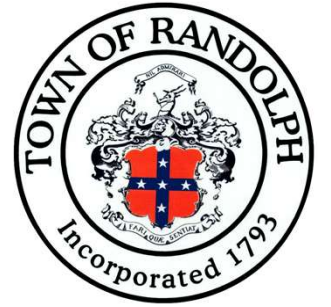


ELIZABETH G. LYONS ELEMENTARY SCHOOL

RANDOLPH, MA



BUILDING COMMITTEE PRESENTATION

MAY 19TH, 2021

TSKP
STUDIO

DAEDALUS
A CHA Company

LYONS ELEMENTARY SCHOOL | GOALS OF THE MEETING

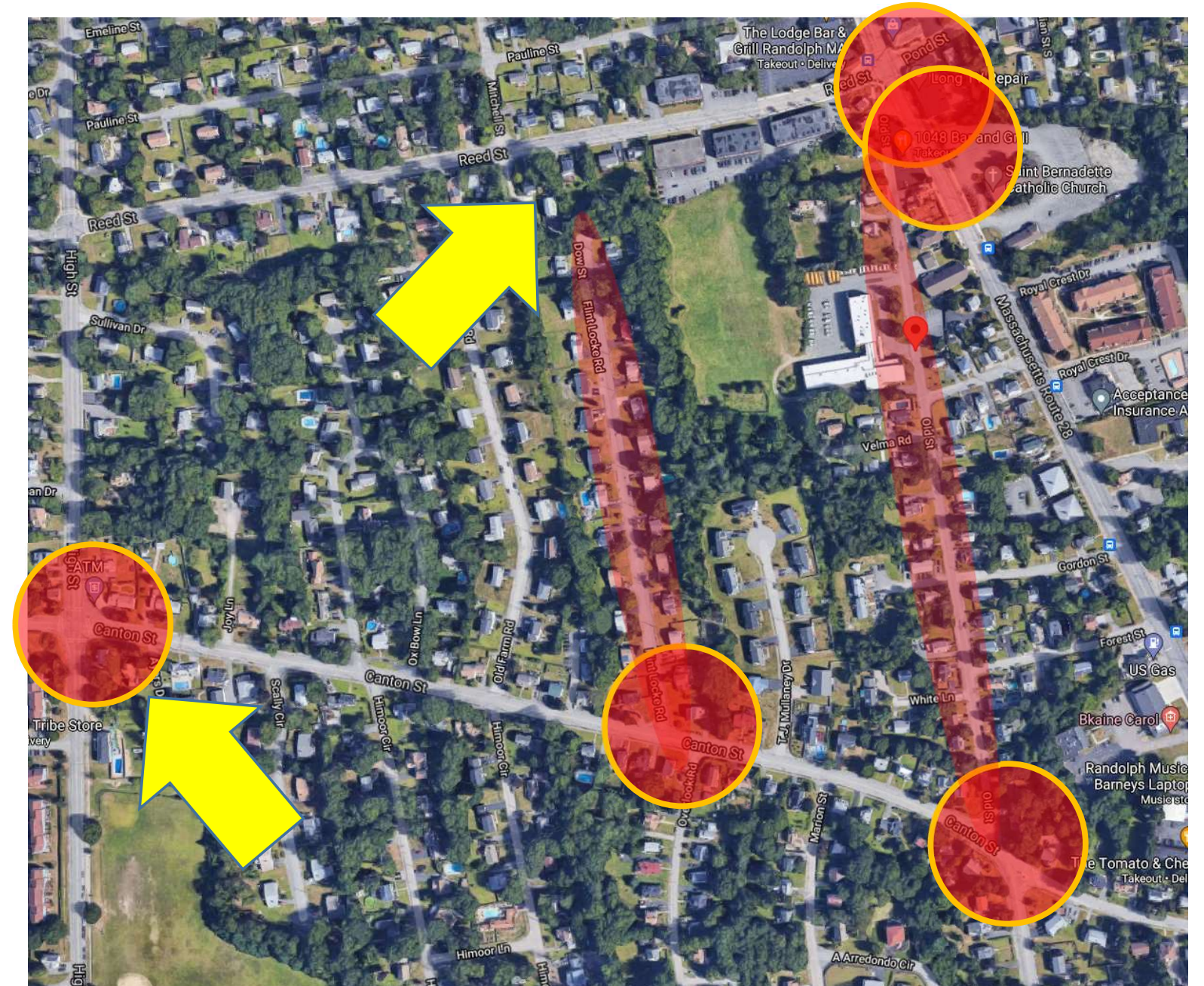
- Traffic Study Proposal
 - Review Redistricting Map
- Site Access
 - Emergency / Fire Access
 - Delivery Truck Access

LYONS ELEMENTARY SCHOOL | TRAFFIC STUDY PROPOSAL

Includes:

- Data collection at five intersections and counts on Old Street and Flint Locke Road
- Data Evaluation Report
- Attendance at a public meeting, if required

Timeframe : 4 - 6 weeks



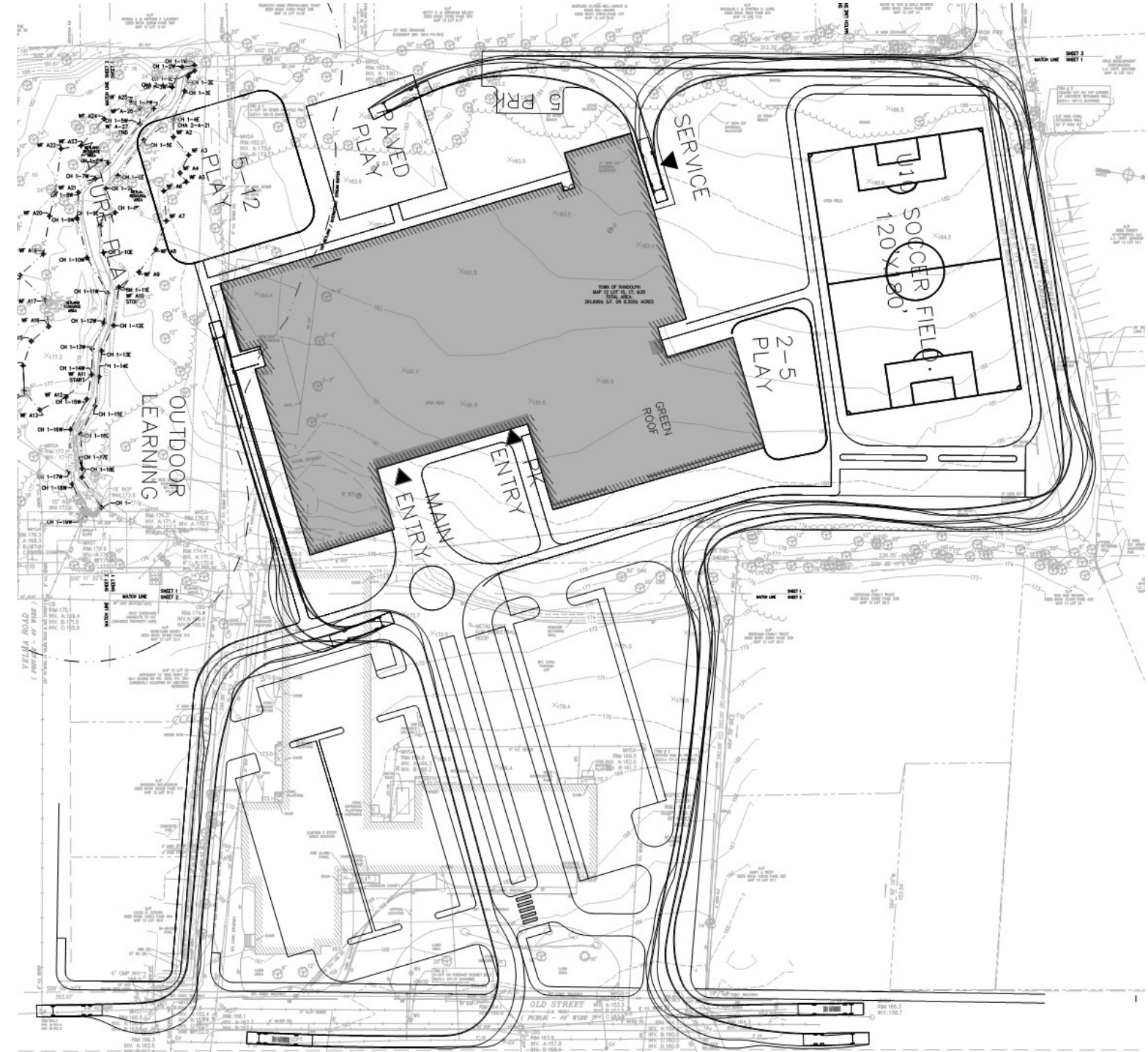
LYONS ELEMENTARY SCHOOL | SITE PLAN



LYONS ELEMENTARY SCHOOL | SITE ACCESS - FIRE

SAE Turning Radius Calculations for Quote No. 98168				
Wheelbase:	250"	Front Bumper Size:	10"	
Body Width:	100"	Front Bumper Extension:	20"	
Front Axle Kingpin Center:	70.66"	Front Wheel Type:	ALUMINUM	
Front Axle Track:	84.46"	Rear Wheel Type:	ALUMINUM	
Front Axle Tire Width:	16.6"	Tire Brand:	MICHELIN	
Dimension Over Rear Tires:	98.59"			
Body Front Overhang:	92"			
Inside Cramp Angle	S. A. E. Turning Radius	Tire Curb Clearance	Bumper Swing Clearance	Minimum Inside Radius
35	41.9'	42.6'	46.6'	28.6'
36	40.9'	41.6'	45.7'	27.5'
37	40.1'	40.7'	44.9'	26.5'
38	39.2'	39.9'	44.2'	25.5'
39	38.4'	39.1'	43.5'	24.6'
40	37.7'	38.4'	42.8'	23.7'
41	37'	37.7'	42.2'	22.8'
42	36.3'	37'	41.6'	22'
43	35.7'	36.4'	41'	21.2'
44	35'	35.7'	40.4'	20.4'
45	34.5'	35.2'	39.9'	19.7'
46	33.9'	34.6'	39.4'	19'
47	33.4'	34.1'	38.9'	18.3'
48	32.8'	33.5'	38.5'	17.6'
49	32.4'	33'	38.1'	16.9'
50	31.9'	32.6'	37.6'	16.3'
Nominal Cramp Angles:				
Meritor FL941 & FL943 axles: up to and including 425/65R22.5 tires		45 degrees		
Meritor FL941 & FL943 axles: 445/65R22.5 tires		38 degrees		
Dana I220W axle: up to and including 445/65R22.5 tires		42 degrees		
Reyco IFS: up to and including 385/65R22.5 tires		48 degrees		
Reyco IFS: 425/65R22.5 tires		45 degrees		
Reyco IFS: 445/65R22.5 tires without front intake		42 degrees		
Meritor Front Drive Axle: up to and including 425/65R22.5 tires		37 degrees		
Marmon Herrington Front Drive Axle: up to and including 425/65R22.5 tires		42 degrees		
This Turning Radius report reflects how the quote was configured. Any succeeding changes may slightly alter the turning radius of the vehicle and the data in this report.				

Randolph Fire Turning Criteria
from Ronald Cassford Chief of Operations

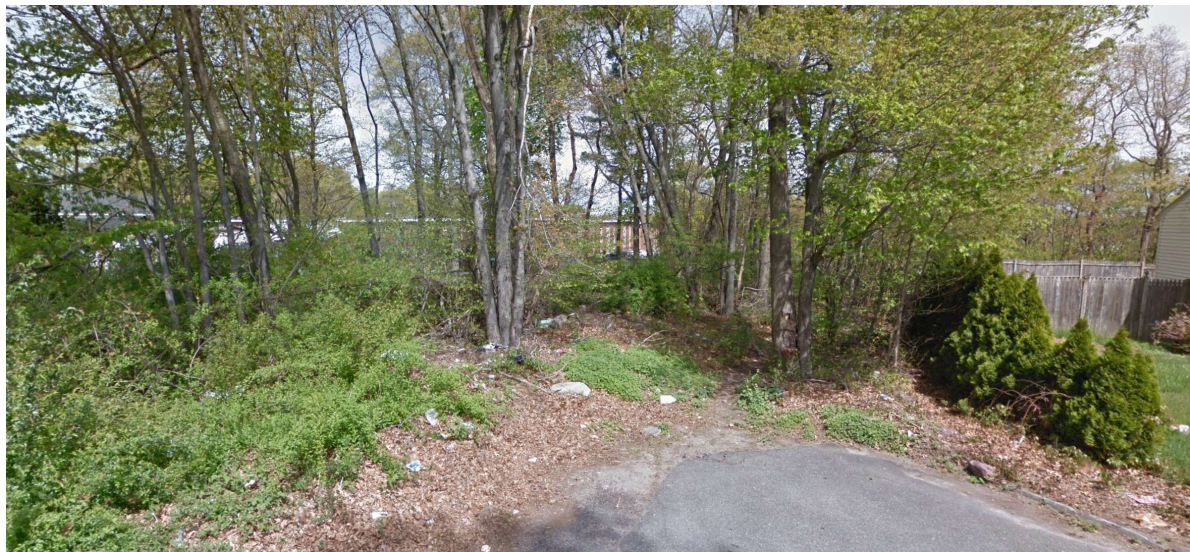


Randolph Fire Access from Old Street

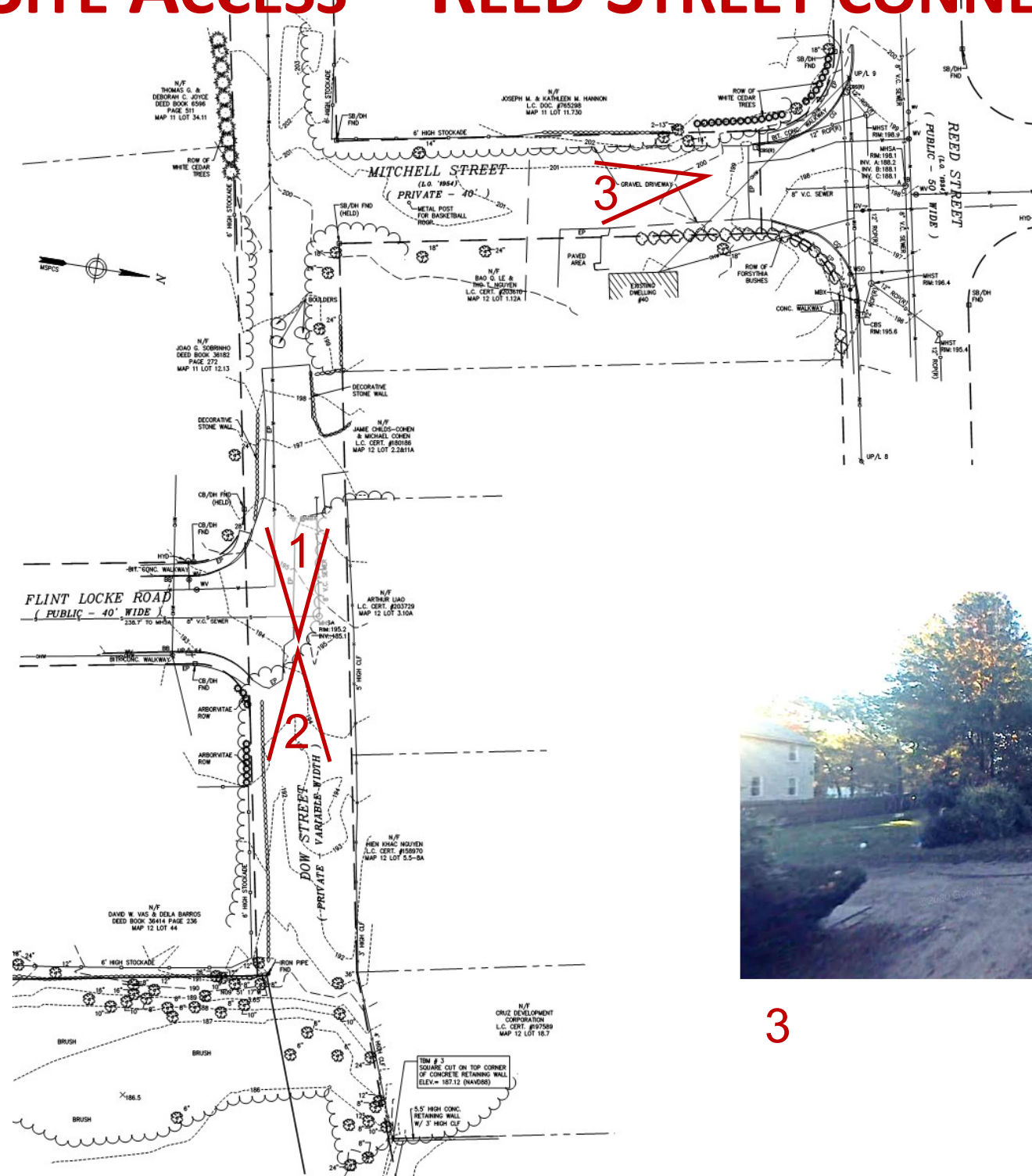
LYONS ELEMENTARY SCHOOL | SITE ACCESS – REED STREET CONNECTOR



1



2



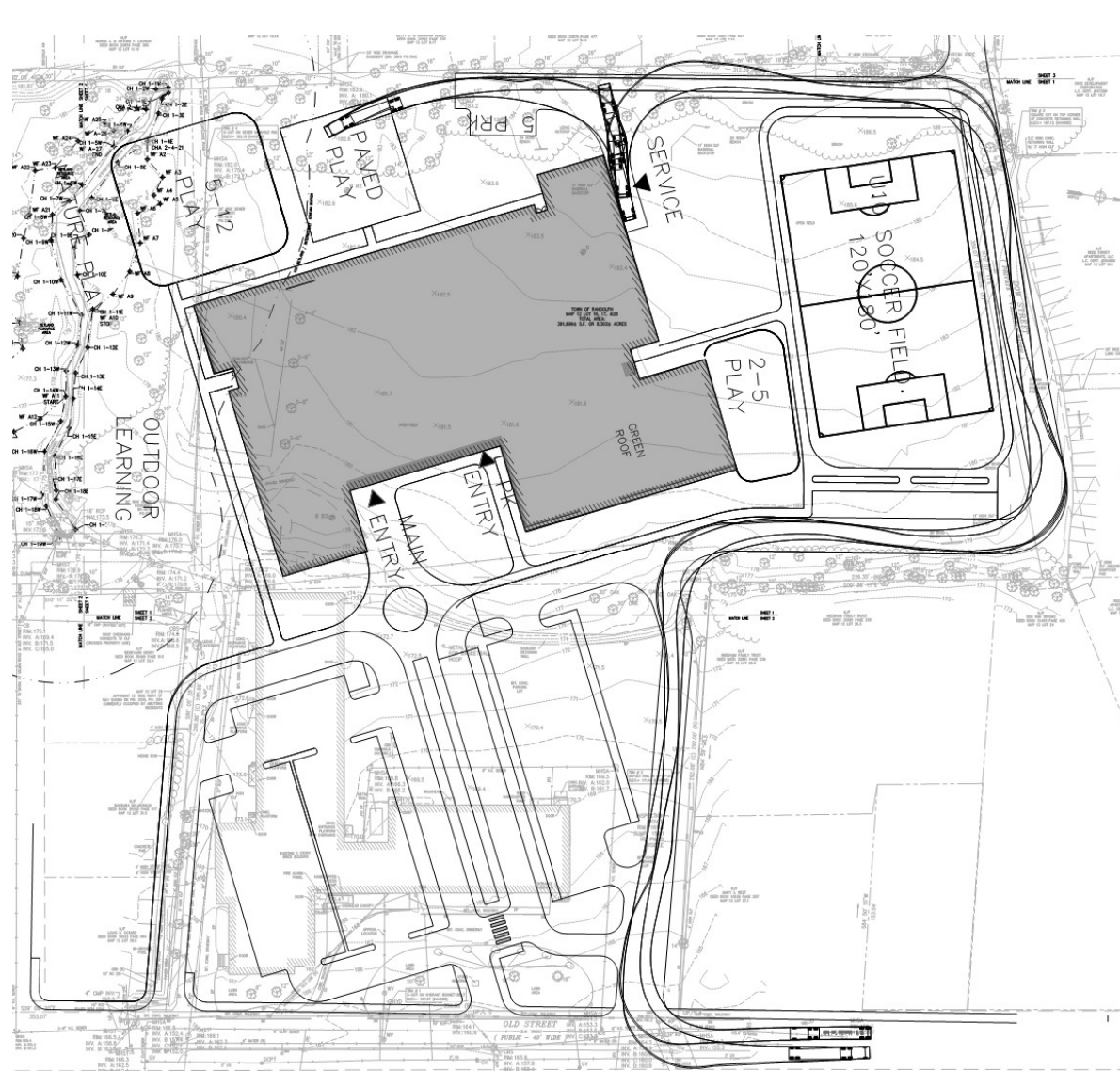
3

LYONS ELEMENTARY SCHOOL | SITE ACCESS - FIRE

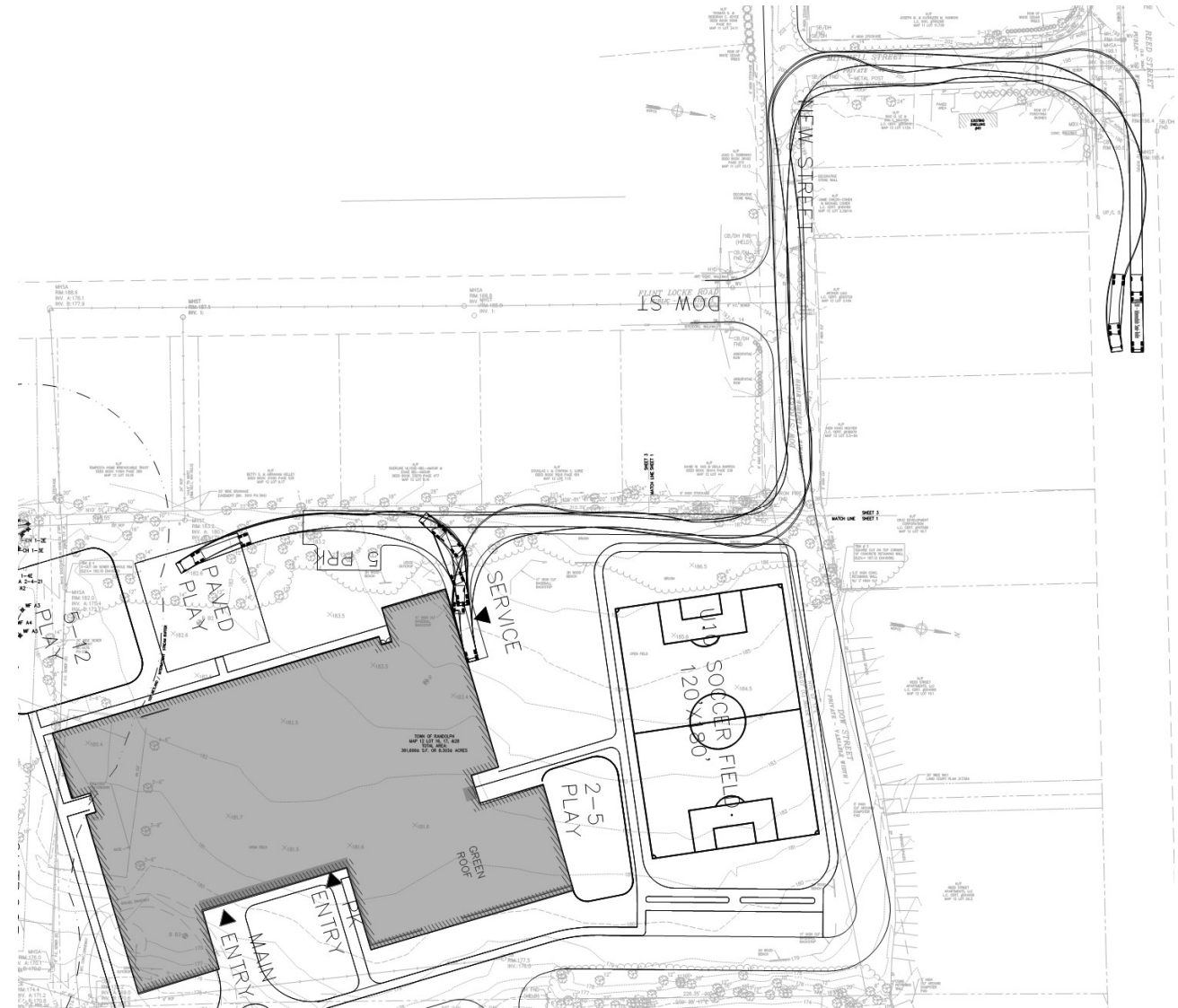


Randolph Fire Access from Reed Street

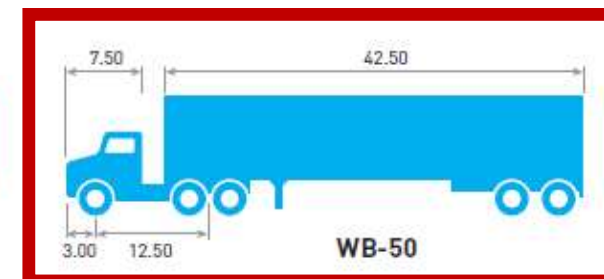
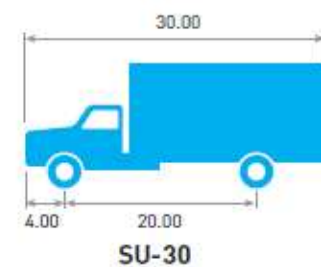
LYONS ELEMENTARY SCHOOL | SITE ACCESS - DELIVERIES



Tractor Trailer (WB-50) Access from Old Street



Tractor Trailer (WB-50) Access from Reed Street

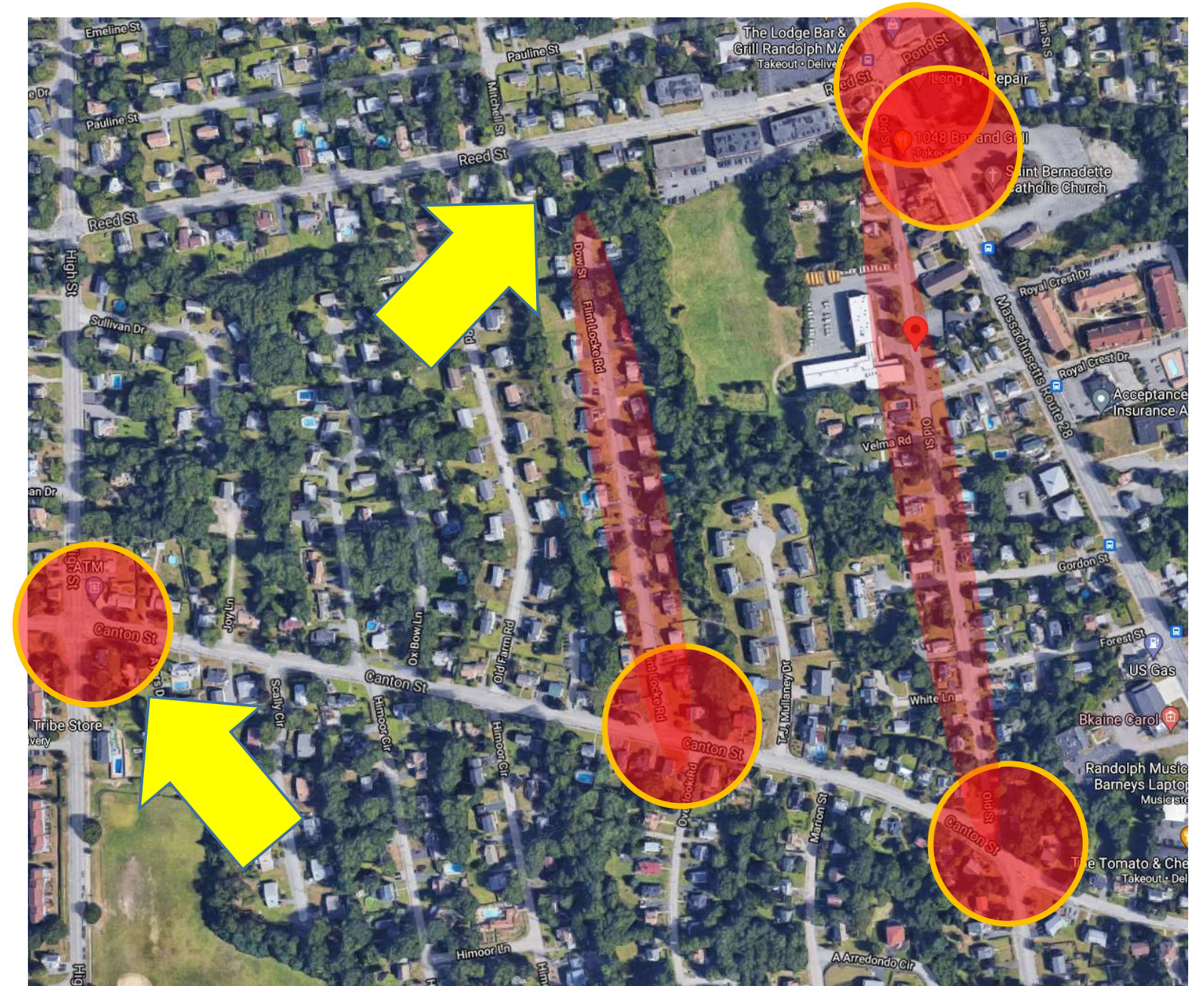


LYONS ELEMENTARY SCHOOL | TRAFFIC STUDY PROPOSAL

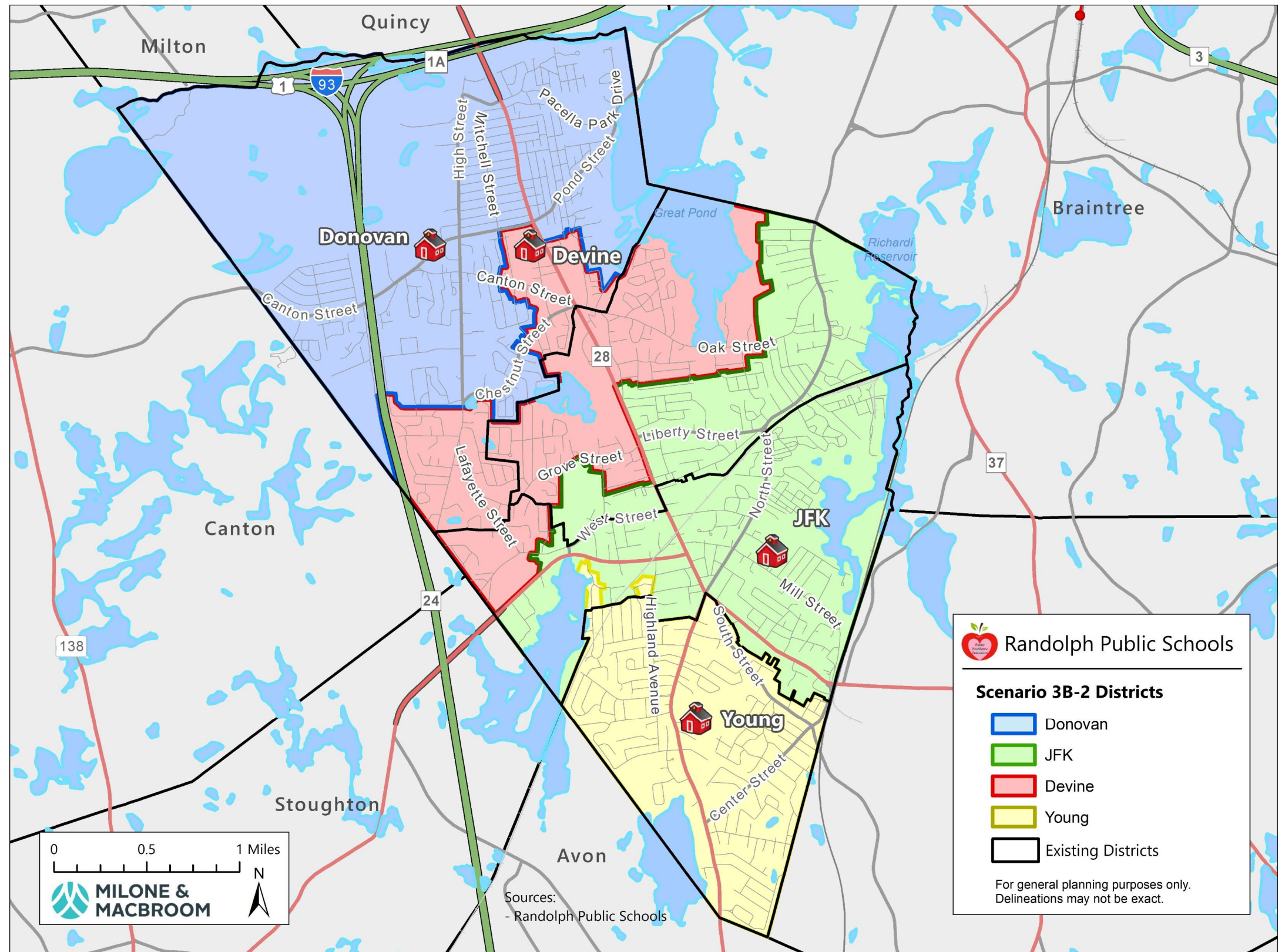
Includes:

- Data collection at five intersections and counts on Old Street and Flint Locke Road
- Data Evaluation Report
- Attendance at a public meeting, if required

Timeframe : 4 - 6 weeks



LYONS ELEMENTARY SCHOOL | REVIEW REDISTRICTING



LYONS ELEMENTARY SCHOOL | TRAFFIC STUDY PROPOSAL

Includes:

- Data collection at five intersections and counts on Old Street and Flint Locke Road
- Data Evaluation Report
- Attendance at a public meeting, if required

Timeframe : 4 - 6 weeks

