



Lyons Elementary School Randolph Public Schools

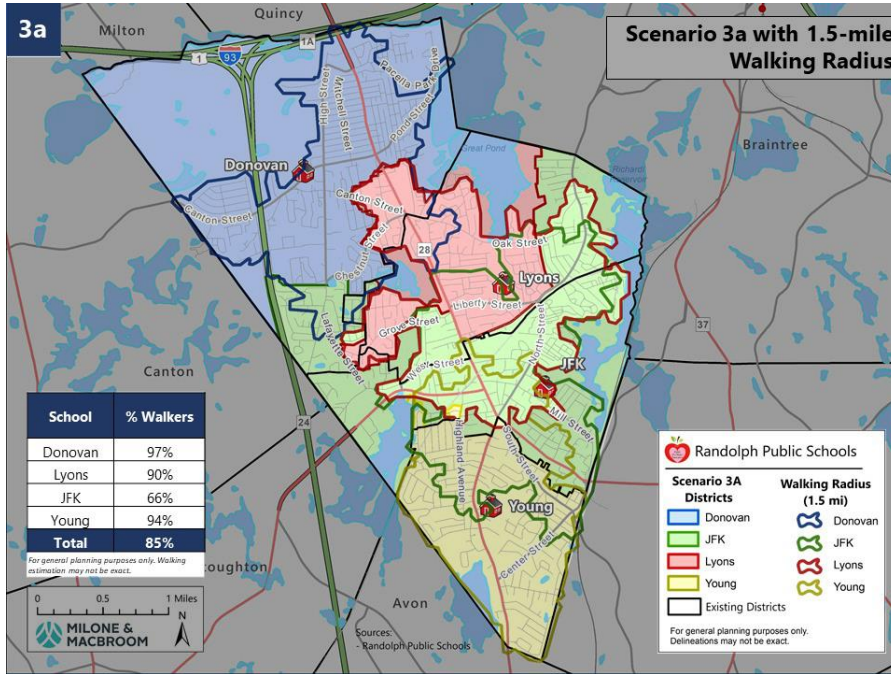
Building Committee
November 4, 2020



TSKP ARCHITECTURE | PLANNING | INTERIORS
STUDIO

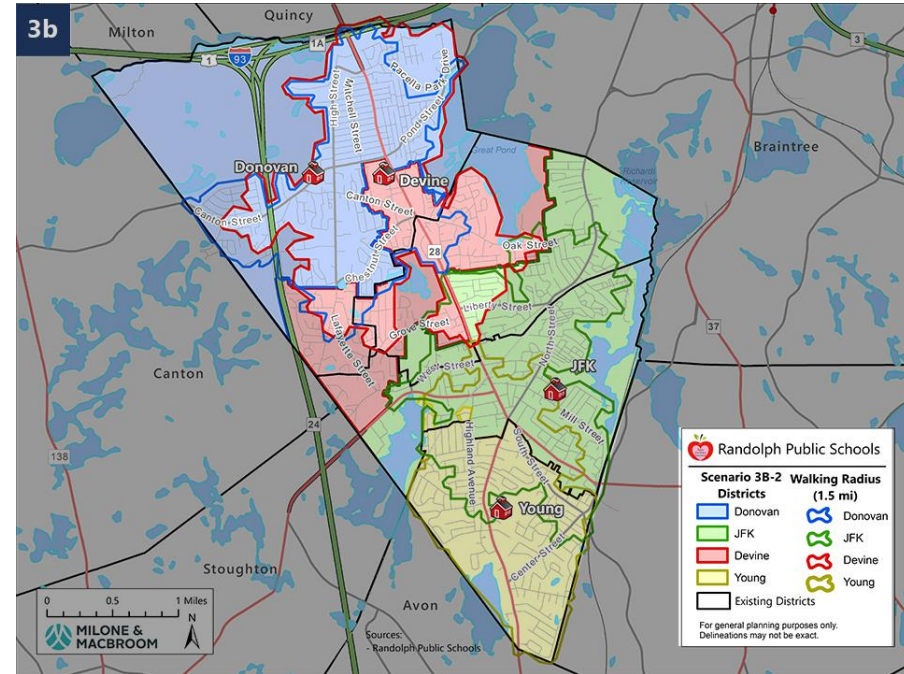
DAEDALUS
A CHA Company

Redistricting Scenarios 3A and 3B



Scenario 3A : Lyons

- 23% of K-5 students moved



Scenario 3B : Devine

- 27% of K-5 students moved

Randolph Redistricting Scenarios - Transportation

	Existing			Scenario 3			Scenario 3a			Scenario 3b			Scenario 3b-2		
	Enroll	Walkers	Walkers Crossing Rt. 28	Enroll	Walkers	Walkers Crossing Rt. 28	Enroll	Walkers	Walkers Crossing Rt. 28	Enroll	Walkers	Walkers Crossing Rt. 28	Enroll	Walkers	Walkers Crossing Rt. 28
Devine										306	265	169	295	221	125
Donovan	442	387	79	388	349	126	394	376	70	385	367	70	385	367	70
JFK	338	241	70	393	236	96	398	285	115	402	298	78	413	342	78
Lyons	304	237	52	312	208	13	301	289	59						
Young	264	213	116	255	254	123	255	254	123	255	254	123	255	254	123
Total	1,348	1,078	317	1,348	1,047	358	1,348	1,204	367	1,348	1,184	440	1,348	1,184	396

DESIGN OPTIONS | OPTIONS COMPARISON



ADDITION / RENOVATION

Add/renovate existing school

- Multiple construction phases extends construction duration
- Some disruption to current students



NEW CONSTRUCTION

Build new school adjacent to existing

- Minimizes disruption to current students



LYONS SITE

NEW CONSTRUCTION

Build new school on existing school footprint

- Requires relocating students during construction to other sites

DEVINE SITE



NEW CONSTRUCTION

Build new school on new site

- No disruption to current students

● Favorable ⊕ Neutral ○ Unfavorable

Criteria	Option 1 - Code Upgrade/ Base Repair	Option 2 - Add/Reno	Option 3 - New Construction at Lyons (Adjacent to Existing Building)	Option 4 - New Construction at Lyons	Option 5 - New Construction at Devine
Local, State, and Federal Requirements					
Address ADA Compliance	○	⊕	●	●	●
Address School Safety and Security Needs	●	●	●	●	●
Public / Private Separation	○	●	●	●	●
Programmatic Needs					
Education Disruption (Phasing)					
Satisfies Educational Program					
Address Undersized Learning Spaces, overcrowding					
Flexible and Collaborative Learning Environments					
Space for New or Enhanced Educational Programming					
Consolidation of Space					
Improve Internal Circulation					
Utilization of Space					
Pre-kindergarten program					
District-wide Special Education (TLC)					
Building Systems					
Energy Efficiency					
Mechanical, Electrical, Plumbing					
Building Envelope					
Green Design					
Site					
Traffic Flow, Pedestrian Safety, and Parking					
Athletic fields					
ADA Compliance					
Site Layout Plan					
Benefits to the Community					
Community Use of the Building					
Shelter in Place					
Re-uses a currently vacant property					

JS's Notes

Passive Surveillance, Clear Drop offs, Emergency Access
Separate zones for public access spaces and academic

Provides all required spaces?
Lack of general classrooms, art and music
Meets goals of 21st century learning.
Maker space, STEAM, JFK District SE

Order and legibility of circulation
Overall efficiency
Includes PK
Includes TLC

Energy efficiency of MEP/FP and envelope

Sustainability

Proximity and access from Gym

PK Proximity to Play areas, Entrance

Building will have power via backup generator