

## MEETING MINUTES

<b>Project:</b> Randolph Lyons School	<b>Meeting Date:</b> November 4, 2020
<b>Time:</b> 1:08 PM	<b>Meeting Location:</b> Zoom
<b>Meeting:</b> School Building Committee	<b>Report By:</b> Tieshia Walton
<b>Attending:</b> Ida Gordon, Chair (IG) Andrea Nixon, Vice Chair (AN)* Ron Lum* (RL) Thea Stovell (TS)* Carlos Colley (CC)* Brian Howard (BH)* Pam Davis (PD)*	Randall Luther / TSKP Yugon Kim / TSKP Jesse Saylor/TSKP Alicia Monks / Daedalus Richard Marks / Daedalus (RM) Adam Smith (AS) *
* Building Committee Member	
<b>Absent:</b> Jim Burgess (JB)* Kevin Donovan (KD)* Casey Haley (CH)* Cindy Lopez (CL)* Lisa Millwood (LM) * Duong Nguyen (DN)*	Mike Rossini (MR)* Judy Littlejohn * Paul McDermott * Steve Nesterak (SN)*

Item	Action
1 The meeting was called to order by Committee Chair Ida Gordon at 1:08	
2 <u>Approval of Meeting Minutes</u> Ron made a motion to approve the October 7 <sup>th</sup> and 21 <sup>st</sup> meeting minutes, seconded by Andrea. Andrea called for a roll call and voting was as follows: a. Brian Howard-Yes b. Andrea Nixon-Yes c. Ida Gordon-Yes d. Thea Stovell-Yes e. Ron Lum-Yes f. Pam Davis-Abstain g. Adam Smith-Yes  Six yes, One Abstain	
3 <u>Public Meeting</u>  Ida made a motion to move agenda Item # 3 before Item # 2, seconded by Thea. Andrea called for a roll call and voting was as follows:	

- a. Brian Howard-Yes
- b. Andrea Nixon-Yes
- c. Ida Gordon-Yes
- d. Thea Stovell-Yes
- e. Ron Lum-Yes
- f. Pam Davis-Yes
- g. Adam Smith-Yes

Unanimous vote.

Two public meeting sessions were held on Tuesday, October 27<sup>th</sup> at 11am and 6:30 pm. The meetings were livestreamed through the Town's Zoom account via YouTube. An informal poll of the participants at both sessions indicated the current Lyons site as the preferred location.

#### 4 Site Selection

Milone and MacBroom generated an additional redistricting option for a scenario where Devine is the chosen site for the new Elizabeth G. Lyons Elementary School, scenarios 3a & 3b detailed on the attached presentation.

No one within the District receives transportation except for students at the elementary level who receive special education.

TSKP created a design matrix to identify the strengths and weaknesses of new construction on the Lyons site or new construction on the Devine site, see attached.

There has been talk around Town about building a campus on the Devine site. The MSBA will not pay for a campus. What a campus entails will need to be clarified. It was noted that the Devine site is just large enough for the school and parking with minimal extra space.

The School Building Committee will review the site recommendations with the full School Committee for review and then present to the Town Council. New construction on the Lyons site will be Option One, and new construction at the Devine site is Option Two.

Ida made a motion to accept Options One and Two and do a full investigation, Andrea seconded. Andrea called for a roll call and voting was as follows:

- a. Carlos Colley-Yes
- b. Andrea Nixon-Yes
- c. Ida Gordon-Yes
- d. Thea Stovell-Yes
- e. Ron Lum-Yes
- f. Pam Davis-Abstain
- g. Adam Smith-Yes

Unanimous vote.

Andrea will look into the team presenting at the next School Committee meeting on November 12<sup>th</sup> at 7:30 PM.

5 Approval of Invoices

No invoices were approved. In the future all invoices that need to be approved will be listed on the agenda.

6 Meeting Adjournment

Ida made a motion to adjourn the meeting, seconded by Carlos. Andrea called for a roll call and voting was as follows:

- a. Carlos Colley-Yes
- b. Andrea Nixon-Yes
- c. Ida Gordon-Yes
- d. Thea Stovell-Yes
- e. Ron Lum-Yes
- f. Pam Davis-Yes
- g. Adam Smith

Meeting was adjourned at 2:25 pm.



# Lyons Elementary School Randolph Public Schools

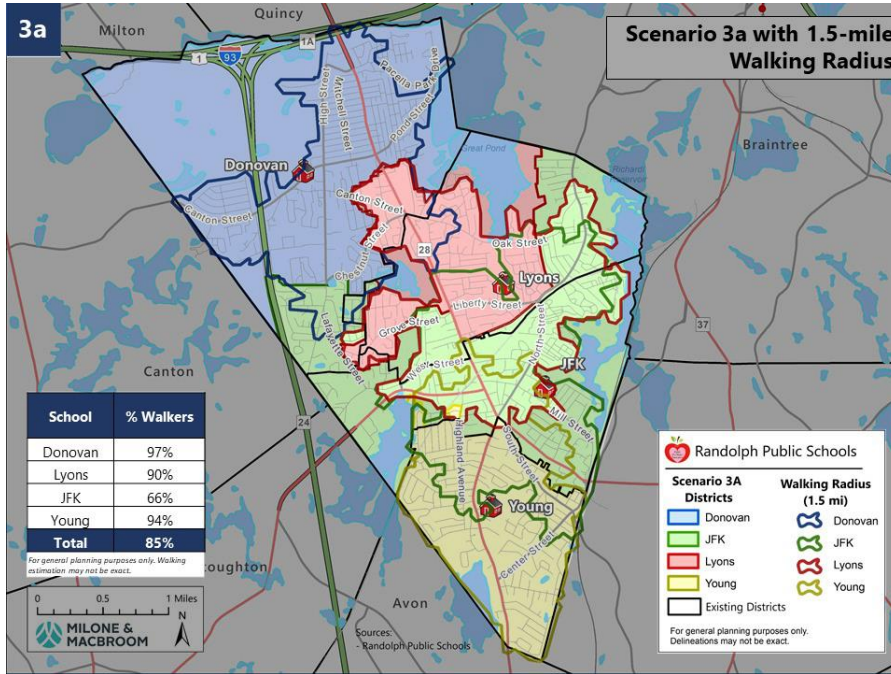
Building Committee  
November 4, 2020



**TSKP** ARCHITECTURE | PLANNING | INTERIORS  
STUDIO

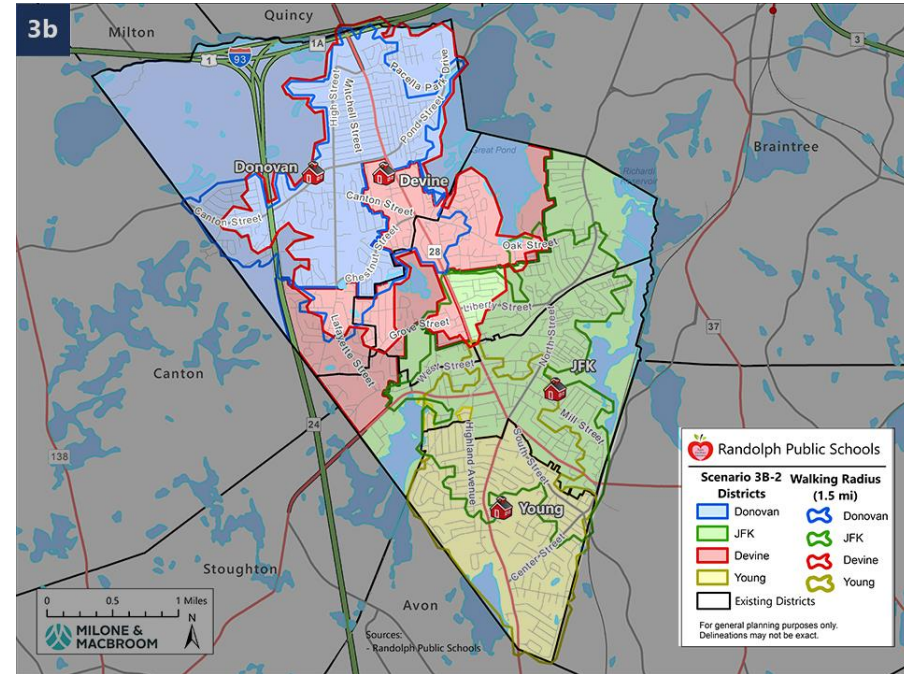
**DAEDALUS**  
A CHA Company

# Redistricting Scenarios 3A and 3B



Scenario 3A : Lyons

- 23% of K-5 students moved



Scenario 3B : Devine

- 27% of K-5 students moved

# Randolph Redistricting Scenarios - Transportation

	Existing			Scenario 3			Scenario 3a			Scenario 3b			Scenario 3b-2		
	Enroll	Walkers	Walkers Crossing Rt. 28	Enroll	Walkers	Walkers Crossing Rt. 28	Enroll	Walkers	Walkers Crossing Rt. 28	Enroll	Walkers	Walkers Crossing Rt. 28	Enroll	Walkers	Walkers Crossing Rt. 28
Devine										306	265	169	295	221	125
Donovan	442	387	79	388	349	126	394	376	70	385	367	70	385	367	70
JFK	338	241	70	393	236	96	398	285	115	402	298	78	413	342	78
Lyons	304	237	52	312	208	13	301	289	59						
Young	264	213	116	255	254	123	255	254	123	255	254	123	255	254	123
<b>Total</b>	<b>1,348</b>	<b>1,078</b>	<b>317</b>	<b>1,348</b>	<b>1,047</b>	<b>358</b>	<b>1,348</b>	<b>1,204</b>	<b>367</b>	<b>1,348</b>	<b>1,184</b>	<b>440</b>	<b>1,348</b>	<b>1,184</b>	<b>396</b>

# DESIGN OPTIONS | OPTIONS COMPARISON



## ADDITION / RENOVATION

Add/renovate existing school

- Multiple construction phases extends construction duration
- Some disruption to current students



## NEW CONSTRUCTION

Build new school adjacent to existing

- Minimizes disruption to current students



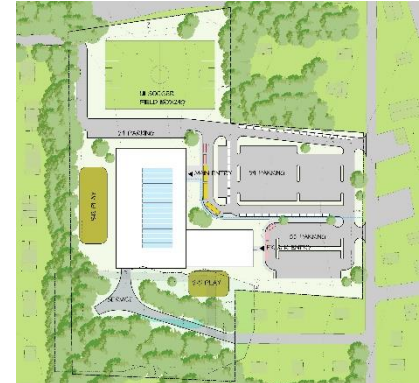
## LYONS SITE

## NEW CONSTRUCTION

Build new school on existing school footprint

- Requires relocating students during construction to other sites

## DEVINE SITE



## NEW CONSTRUCTION

Build new school on new site

- No disruption to current students

● Favorable      ⊕ Neutral      ○ Unfavorable

Criteria	Option 1 - Code Upgrade/ Base Repair	Option 2 - Add/Reno	Option 3 - New Construction at Lyons (Adjacent to Existing Building)	Option 4 - New Construction at Lyons	Option 5 - New Construction at Devine
<b>Local, State, and Federal Requirements</b>					
Address ADA Compliance	○	⊕	●	●	●
Address School Safety and Security Needs	●	●	●	●	●
Public / Private Separation	○	●	●	●	●
<b>Programmatic Needs</b>					
Education Disruption (Phasing)					
Satisfies Educational Program					
Address Undersized Learning Spaces, overcrowding					
Flexible and Collaborative Learning Environments					
Space for New or Enhanced Educational Programming					
<b>Consolidation of Space</b>					
Improve Internal Circulation					
Utilization of Space					
Pre-kindergarten program					
District-wide Special Education (TLC)					
<b>Building Systems</b>					
Energy Efficiency					
Mechanical, Electrical, Plumbing					
Building Envelope					
Green Design					
<b>Site</b>					
Traffic Flow, Pedestrian Safety, and Parking					
Athletic fields					
ADA Compliance					
Site Layout Plan					
<b>Benefits to the Community</b>					
Community Use of the Building					
Shelter in Place					
Re-uses a currently vacant property					

JS's Notes

Passive Surveillance, Clear Drop offs, Emergency Access  
Separate zones for public access spaces and academic

Provides all required spaces?  
Lack of general classrooms, art and music  
Meets goals of 21st century learning.  
Maker space, STEAM, JFK District SE

Order and legibility of circulation  
Overall efficiency  
Includes PK  
Includes TLC

Energy efficiency of MEP/FP and envelope  
  
Sustainability

Proximity and access from Gym  
  
PK Proximity to Play areas, Entrance

Building will have power via backup generator